



REALITY CAPTURE

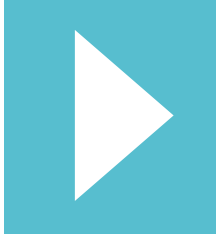
EASILY CAPTURE, VIEW AND CONTROL PROJECT PROGRESS

HYPERLAPSE

CONSTRUCTION VIDEO & REALITY CAPTURE

More than a production company

**The professional long term
timelapse, drone solutions and
reality capture in construction**



PLAY VIDEO

**Reality Capture
is the process of
creating digital
representation
of your
construction site**



HYPERLAPSE



Easily capture, view and control project progress



1. Drone mapping

Drones equipped with advanced sensors and cameras, provide detailed aerial views and data

2. Close out walkthroughs

Upload multiple plans for each phase and compare as-built to design.

3. Trade partner inspections

Verify and document work performed for payout and punch list items based on trade partners' scope of work.

4. Safety and progress tracking

Increase the frequency of remote inspections with 360 walkthroughs, including interior build-out on multi-level buildings.

5. View remotely

See your jobsite in 360° from anywhere, anytime. Photos become available instantly.

6. Control, monitor progress and collaborate

Easily compare 360° photos side-by-side with your BIM models, historical photos and project schedules.

Easily capture, view and control project progress

REALITY CAPTURE SERVICES

HYPERLAPSE

Pointcloud
3D Textured Mesh



Easily capture, view and control project progress

HYPERLAPSE

Quick and cost-effective collection of data

Highly accurate, reliable, quantifiable results

Improved efficiency - one widely mapped area can be used for multiple analyses

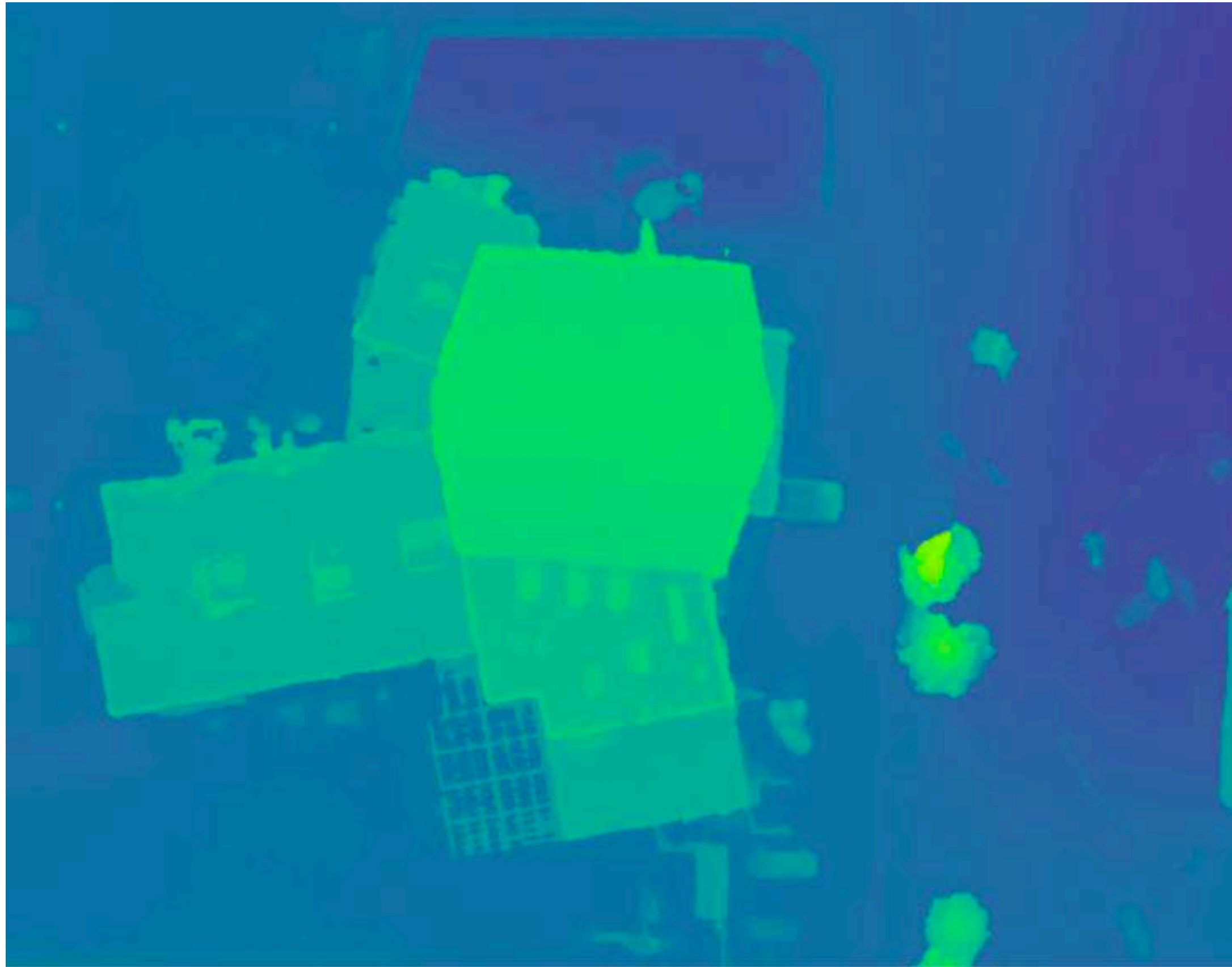
Provides an actual and permanent photographic record



Easily capture, view and control project progress

HYPERLAPSE

SURFACE MODEL



TERRAIN MODEL

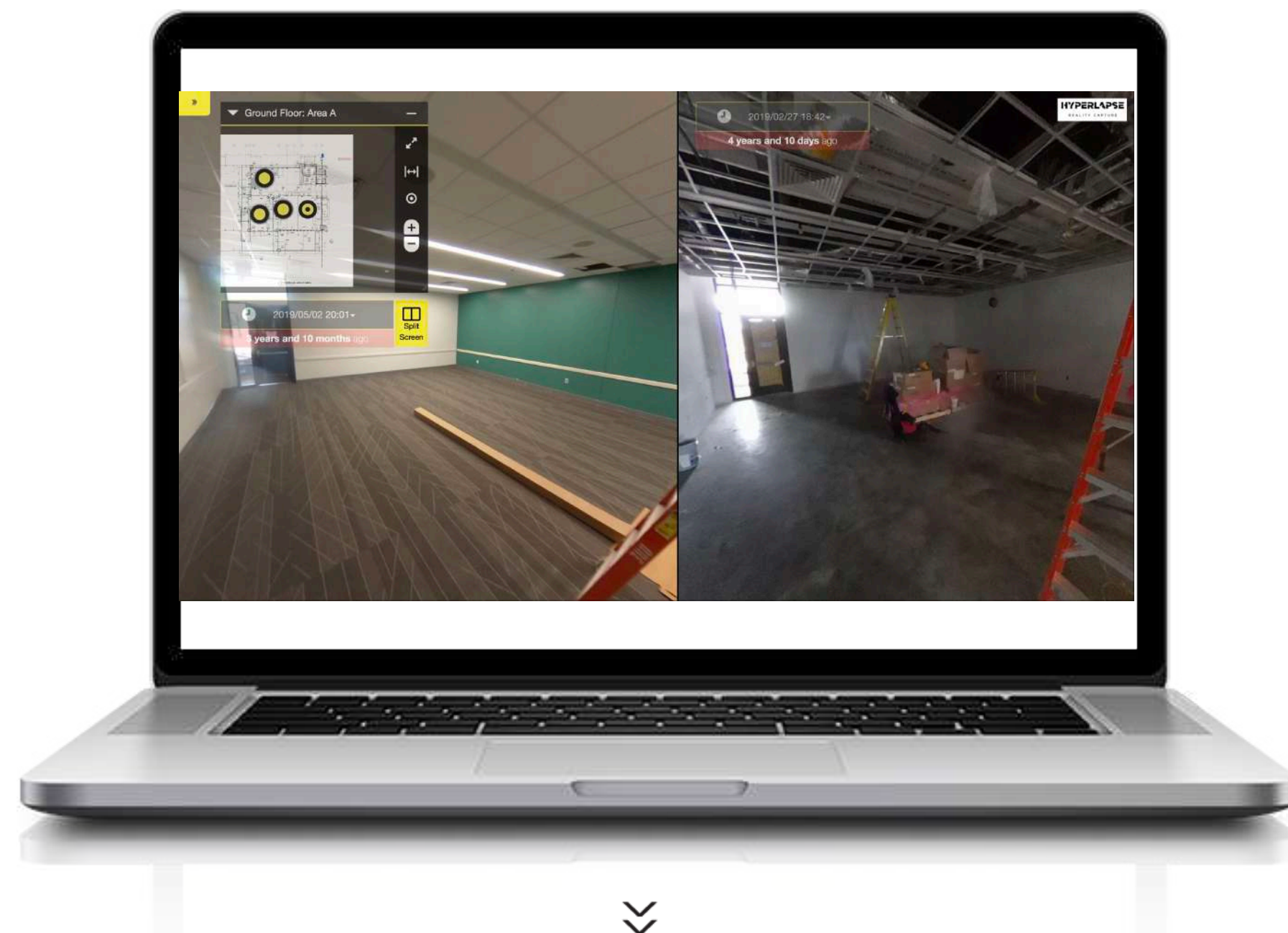


Easily capture, view and control project progress

HYPERLAPSE

CONSTRUCTION SITE PROGRESS MANAGEMENT PLATFORM

360 Walkthrough enables teams to digitize interior and exterior property conditions for preventive maintenance, contractor repairs, and routine inspections.



View side-by-side date comparisons of project progress to validate work done

360 Walkthroughs for Construction

Pré Construction phase completion and close out walkthroughs

Upload multiple plans for each level and phase and compare current conditions and as-built to design

Trade partner inspections

Verify and document work performed for payout and punch list items based on trade partners' scope of work for each level.

Safety and progress tracking

Increase the frequency of remote inspections with 360 walkthroughs, i for all phases of construction, including interior build-out on multi-level buildings.

View remotely

See your jobsite in 360° from anywhere, anytime. Photos become available instantly.. est assured that your project is fully documented and recorded for photographic proof of progress—whenever and wherever you need it.

Control, monitor progress and collaborate

Easily compare 360° photos side-by-side with your BIM models, historical photos and project schedules to make sure project progress is going as planned. Mark-up, annotate and tag photos to coordinate tasks around a single source of truth.

Easily capture, view and control project progress

HYPERLAPSE

Simple and collaborative workflow

Capture

Weekly data collection organizing and sending 360 data for platform integration

Analyse

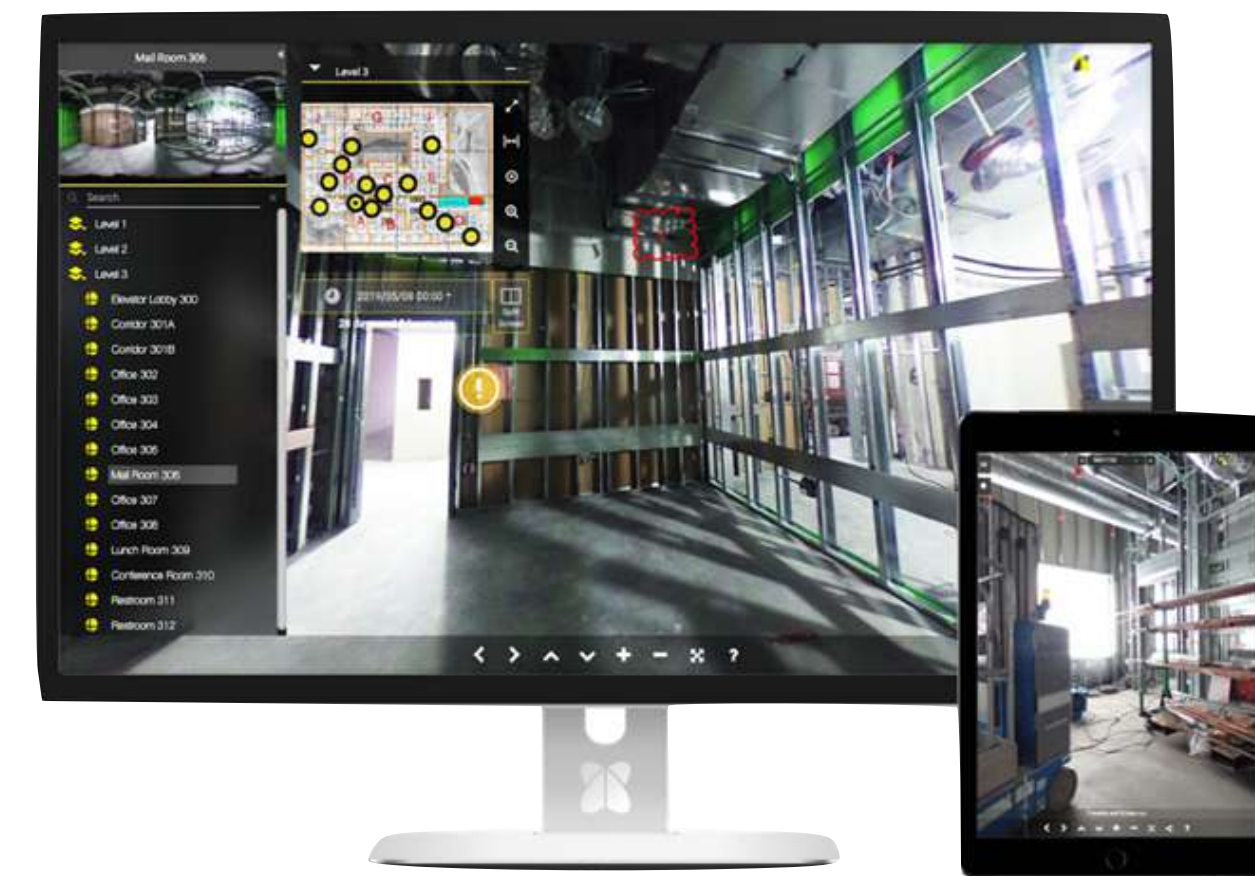
Online 360 workspace allows teams to tour walkthrough paths aligned to aerial maps or building floor plans for each level

Share

Viewer and Manager profiles that can access 360 Walkthroughs to virtually view and inspect or generate issues depending on the profile

Easily capture, view and control project progress with 360° Photos.

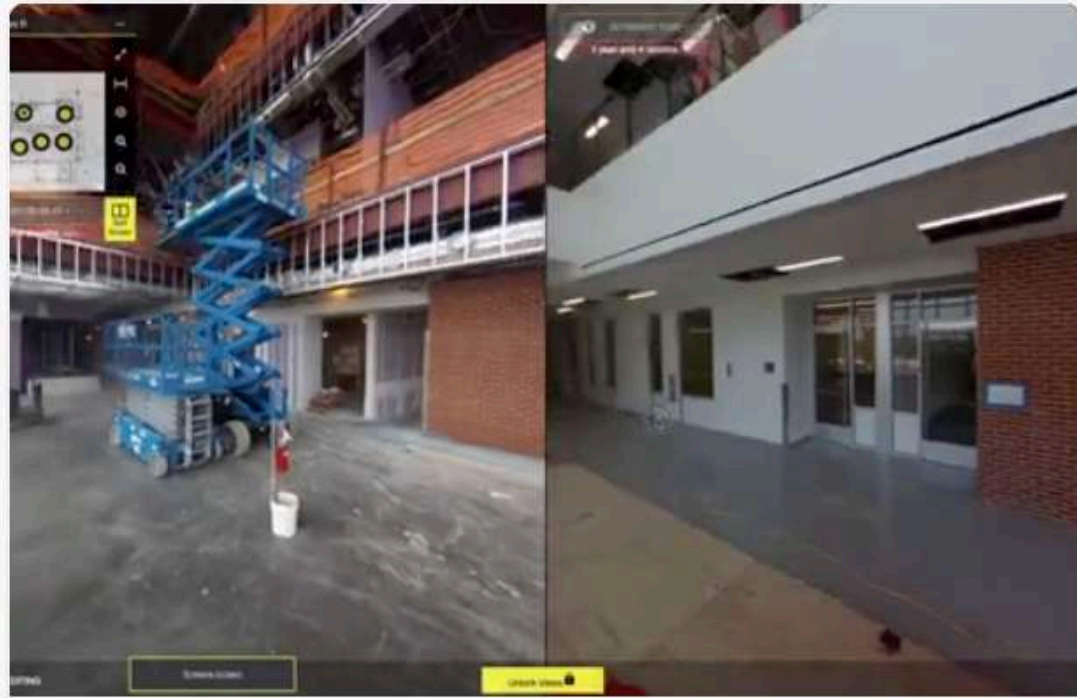
Enabling teams to stay on schedule and on budget.



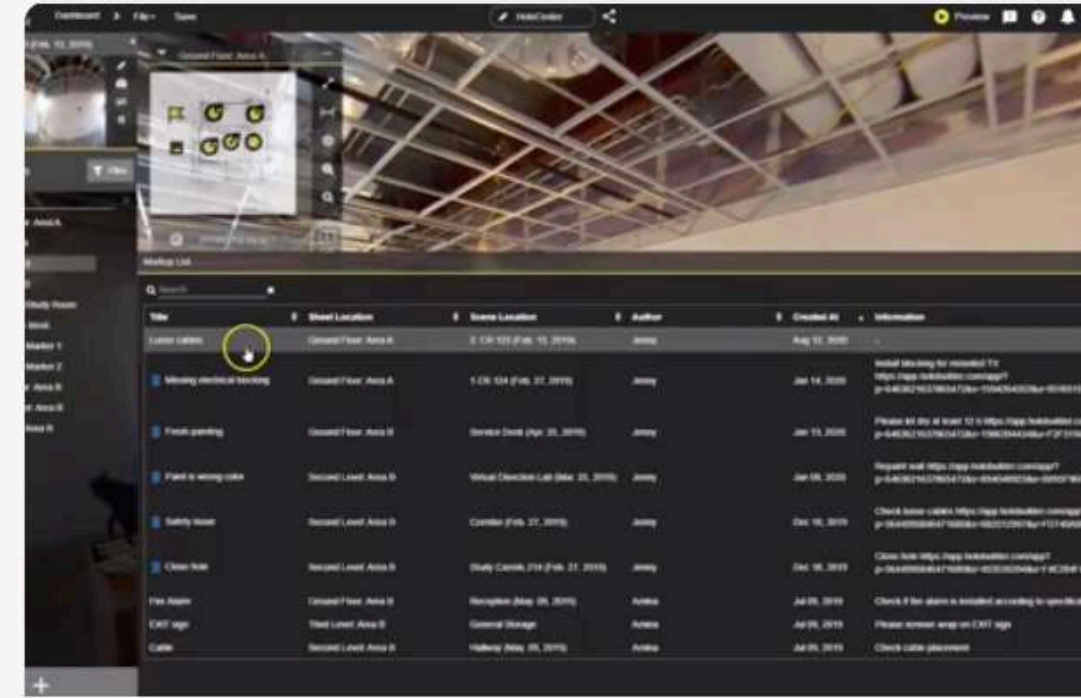
Easily capture, view and control project progress

HYPERLAPSE

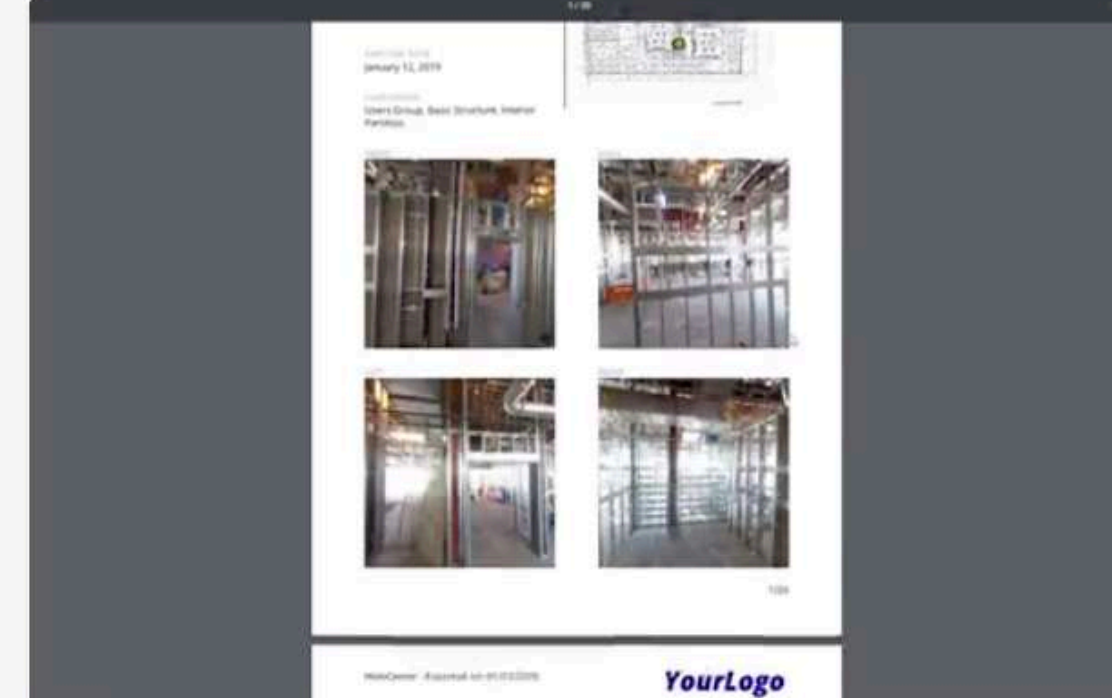
CONSTRUCTION SITE PROGRESS MANAGEMENT PLATFORM



Track Progress Like A Pro



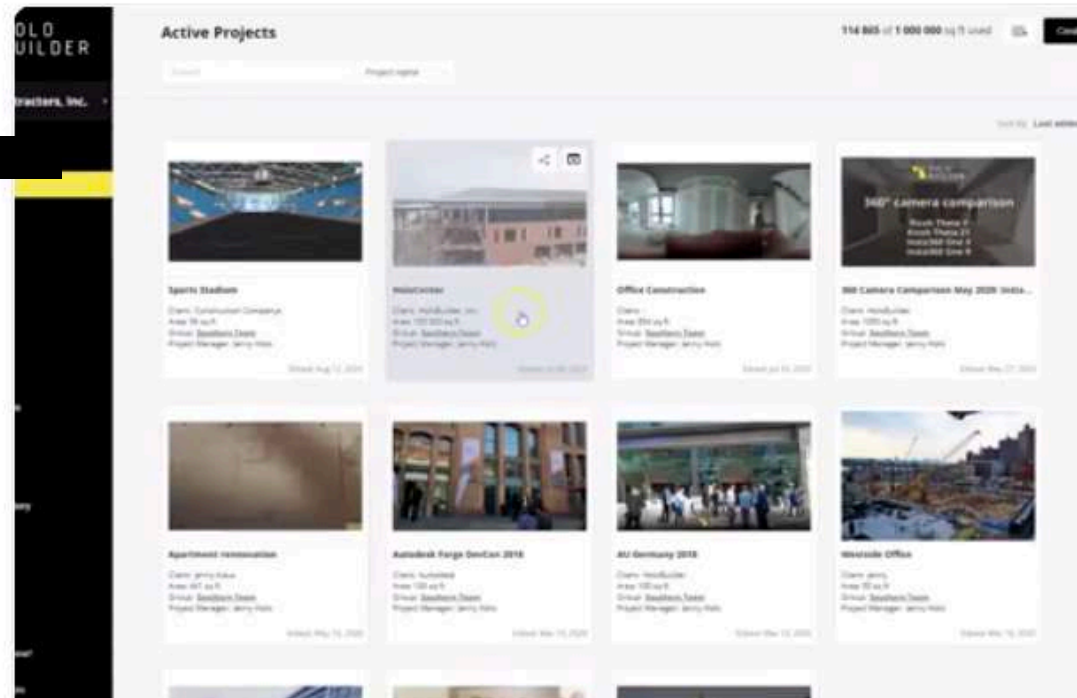
Organize Your Markups



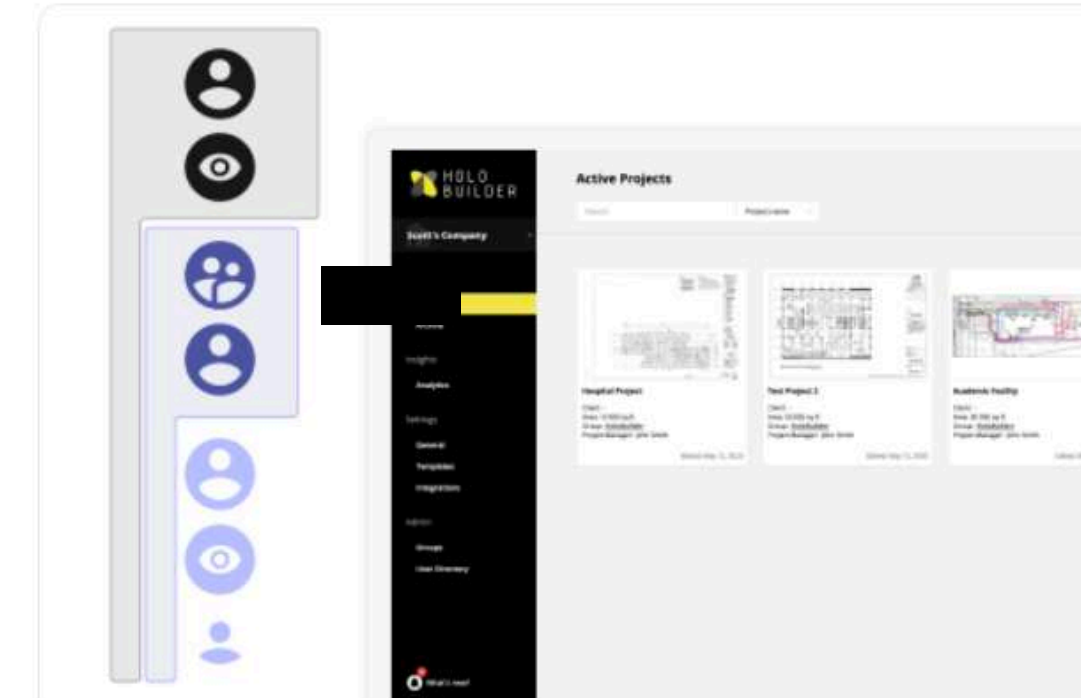
Powerful Reports For Stakeholders



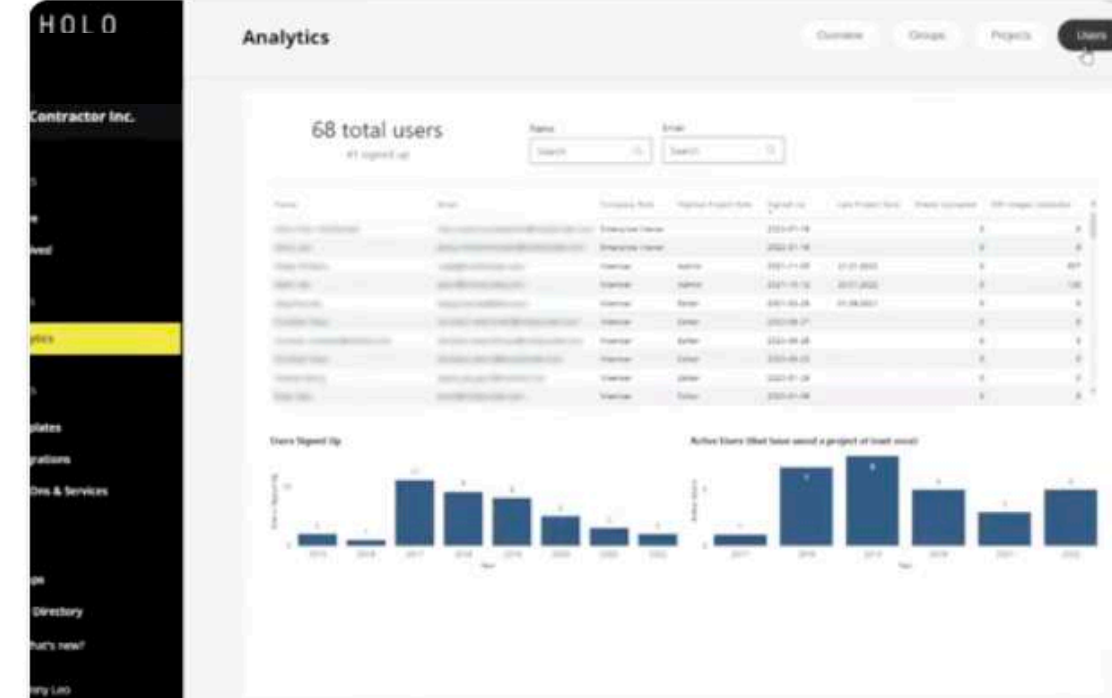
Compare BIM Models with Progress



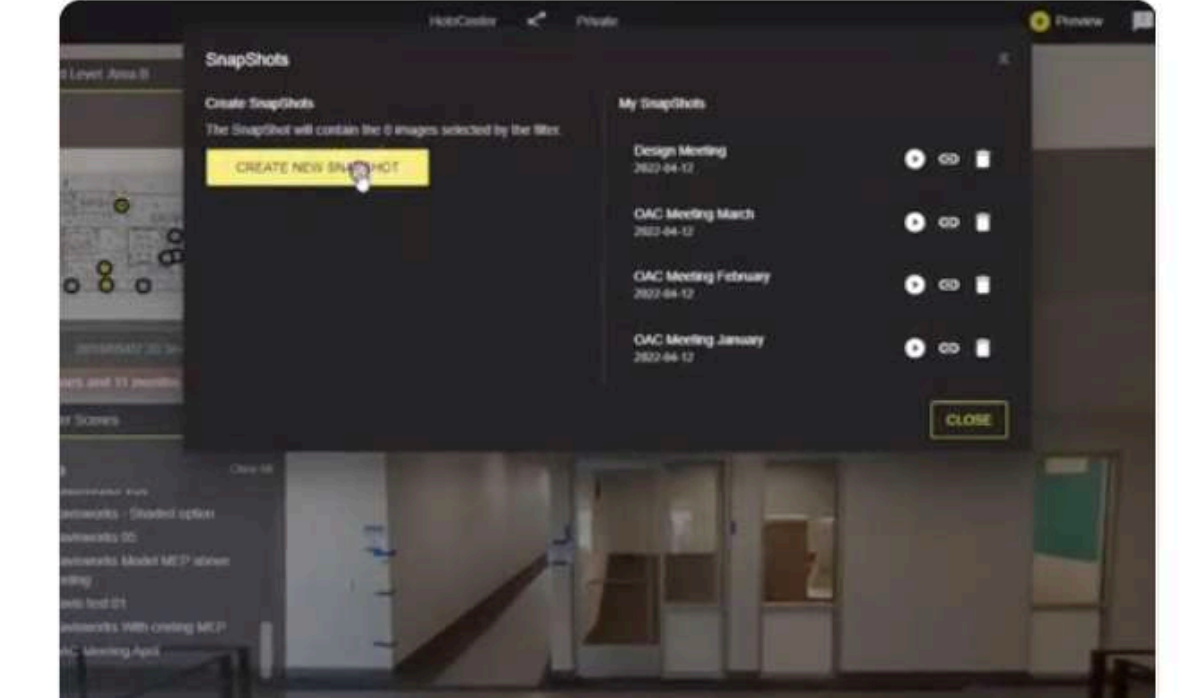
Centralized Project Information



Secure, Permission-based Access



Premium Analytics



Shareable SnapShots

Easily capture, view and control project progress

HYPERLAPSE

Graphs



Follow on a selected period the evolution of the number of people, their PPE, vehicles and construction machinery to understand site dynamics.


Easily capture, view and control project progress

HYPERLAPSE

Detections

Detections 06/19/23 → 06/20/23

Car 3 Dump truck 1 Excavator 3 Person 1



Dump Truck

Excavator

Car / 0.65

Car / 0.64

Car / 0.34

Dump Truck / 0.87

Excavator / 0.89

Excavator / 0.88

Excavator / 0.63

Person / 0.6

18 / 50 06/20/23 - 12:45 pm 8 detection(s) for this photo

Identify and detect objects and people on each image. Vehicles, Construction Equipment, People and Personal protective equipment

Easily capture, view and control project progress

HYPERLAPSE

Analytics

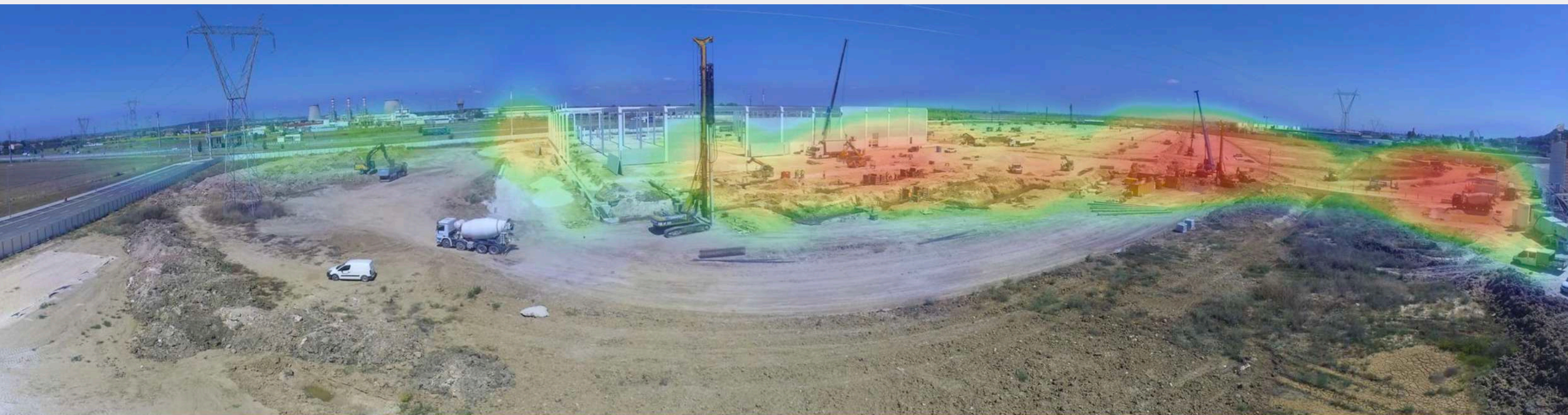


Measure the level of activity on the construction site to optimize resources and plan timelines and check on-site compliance with personal equipment to ensure safety guidelines are being followed.

Easily capture, view and control project progress

HYPERLAPSE

Heatmap



Opacity: 50%

Visualize the density and spatial distribution of personnel and vehicles on site using a heat map

Easily capture, view and control project progress

HYPERLAPSE

Know more about Hyperlapse Solutions



CONSTRUCTION VIDEOS

All type of Construction Videos with multi techniques | Timelapse |
Long term timelapse | Aerial images | On-site filming | Promotional video | Report video

LONG TERM TIMELAPSE

Showcases in minutes what took months to accomplish, namely buildings,
refurbishments fit-outs and logistic platforms

AERIAL IMAGES

Aerial Photo | Aerial Footage | Drone Livestream

LIVE IMAGE

Access your job site from anywhere, anytime | Compare photos with
different dates side by side | Remotely monitor the construction site progress

PROMOTIONAL VIDEOS

On-Site Filming | Aerial Images | Location & Landmarks | Animation |
Interviews | Teasers | Social Media Content

Our Technology, Your Reality.

Why choose **Hyperlapse?**

Innovation, efficiency, and creativity

With technological progress, the rise of video content and the opportunity of remote experience, the construction sector has been profoundly transformed. The powerful combination of video and Reality Capture has ushered in a new paradigm full of innovation, efficiency and creativity in the Architecture, Engineering and Construction (AEC) segment.

Empowering informed decisions

Through carefully positioned cameras, construction projects are meticulously documented, as a visual timeline capturing intricate details and preserving every milestone of the construction process. This allows AEC professionals, developers and investors to monitor remotely – collecting insights that were previously unreachable – identify challenges and make informed decisions throughout the project lifecycle. Reality Capture technology, including 360-degree equipment and innovative collaborative platforms has revolutionized the AEC sector.

Economic & environmental sustainability

Reality Capture vastly improves productivity, accuracy, quality, safety and even sustainability, supporting the reduction of the carbon footprint and promoting cost savings in travels to and from the project.

Impacting key stakeholders and public opinion

Dynamic construction videos offer a unique and innovative marketing and communications tool, allowing companies to showcase their expertise, achievements and masterpieces through stunning footage, virtual tours and, above all, a story about progress. All these assets impact key stakeholders, potential clients, and public opinion.

By embracing Video and Reality Capture, you embrace the Future of Construction.

This is Hyperlapse's unique selling proposition.

Let's build reality together

hello@hyperlapse.pt

HYPERLAPSE

www.hyperlapse.pt